

Electro-mechanical operator
for swing door

ISO



The **ISO** operator allows automation of any type of swing door, whether new or old.

Designed for intensive use, it is suitable for all places where large numbers of people are moving around: offices, hotels, restaurants...

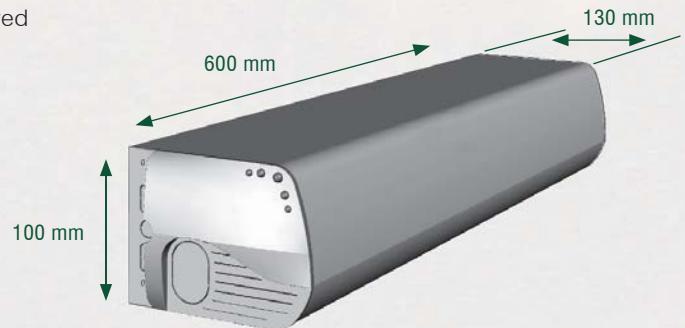
It is also intended for areas where hygienic rules have to be observed and where it is not appropriate to touch door handles: hospitals, clinics, medical theaters, laboratories...

Elegant and silent, the ISO operator simply turns any door into an automatic door.

ISO is a self-learning electro-mechanical swinging door operator. The door is opened by micro-controller. In case of power failure, the door is closed by an electro-mechanical device.

The header case with its slim profile and curved lines compliments the existing framing.

It is compact and offers high-performance functionality and safety characteristics, handling heavy doors up to 550 lbs as a push operator.



COMPASS ARM FOR
PUSHING ASSEMBLY



SLIDING ARM FOR
PULLING ASSEMBLY

1. LOGICAL UNIT

- OPERATOR CONFIGURATION BY MINI SWITCHES
- ADJUSTMENT BY POTENTIOMETER
- CONTACT OUTPUTS
- MASTER/SLAVE DIALOG
- DETECTION / SECURITY /CONTROL INPUTS

2. ACTUATOR UNIT

- MOTOR / TRANSMISSION DEVICE
- END-OF-MOVEMENT SYSTEM
- INTRINSIC ENERGY RECALL DEVICE



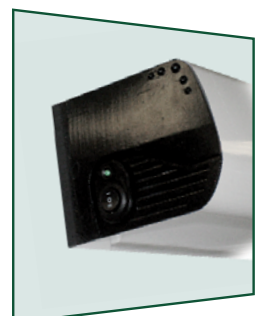
3. • 3-POSITION MODE SELECTOR
- AUTOMATIC MODE
 - MANUAL MODE (OFF)
 - OPEN MODE
- DOOR STATUS LED INDICATOR LIGHT

4. • ARTICULATED ARM (PUSH) OR ROD(PULL) / FIXED ARM
- PROTECTION OF ARTICULATIONS AND SHAFTS BY SAFE AND ELEGANT CASINGS.

Controls and detectors

ISO can be controlled by different control systems such a push-buttons, motion sensors, infrared curtains, contact mats, etc.

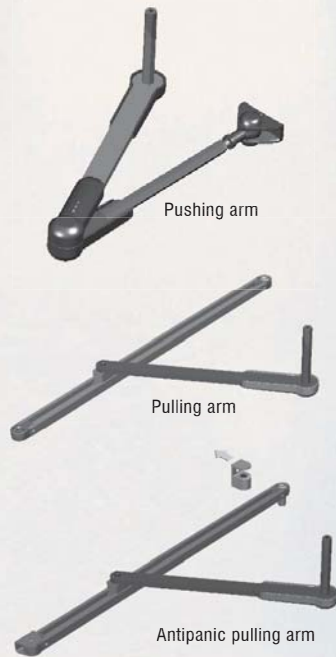
Safety devices can also be connected (fire alarm device, electric strikes, magnetic locks...).



3-position mode selector

The **ISO** operator is designed as a pull (sliding arm) or push operator (compass arm), opening on the left or right side.

As a pull assembly, a breakout arm can be installed to handle the leaf in both directions.



Typical applications



EMERGENCY
EXITS



WINDY
AREAS



INDUSTRY AND
TERTIARY



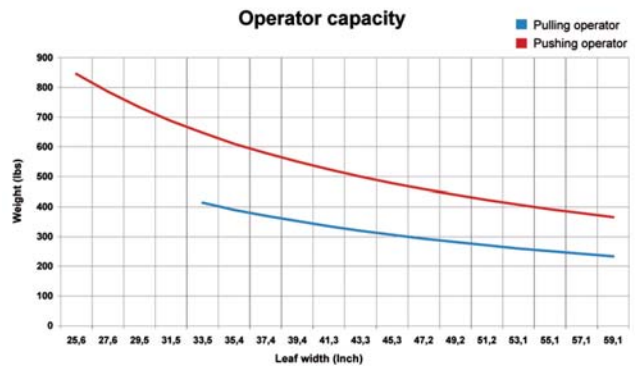
HOSPITAL
MEDICAL



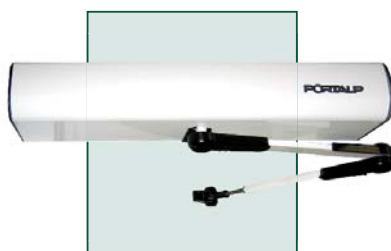
HANDICAPPED
PERSON ACCESS

- The settings for the door movement are automatically pre-defined by a program to ensure smooth and safe movement of the door regardless of weight. If an obstacle gets in the way of the opening or closing door, the door stops and reopens or recloses automatically and is ready to start again.
- In the event of an electrical failure, the operator works in the same way as a standard door closer: The door closes mechanically and safely via an Intrinsic Mechanical Energy device. The door can then be used manually.
- The “Push and Go” function brings an appreciable aid to the user for opening, whilst manual operation is allowed: the **ISO** operator opens the door automatically as soon as the user begins to push the door.

- **ISO** is designed to work in a windy area. The “anti-wind” function closes the door (pushing operator) despite the strength of the wind.
- In the case of a double door, 2 **ISO** operators are associated to work as “master and slave”. The master door opens before the slave door, and closes again last for the right overlapping of the doors.



6-position mode selector



Overall view



Protective casing on arm



Switch without contact

Characteristics



MECHANICS

Assembly	Horizontal pulling or pushing	
Structure	Aluminium	
Casing (L x H x D)	39" x 3.9" x 5.1"	
Weight	20.9 lbs	
Flasks	ABS Shoc Black ULVO plastic	
Protection index	IP 32	

PERFORMANCES

Max. opening angle	120° pushing, 95° pulling with tolerance of +/- 3°	
Max.weight of door 1000mm width	Pushing	Pulling
	550 lbs	352 lbs
Passage width min/max*	Pushing	Pulling
	- 1 leaf	25.5" / 59"
- 2 leaves	51.1" / 118.1"	64.5" / 118.1"
Opening / closing time	Adjustable from 3 to 6 seconds for weight of 176.2 lbs to 550 lbs (pushing)	
Timing, holding open	0 to 60 seconds	
Output	2 dry contacts NO (closed/open door position)	

ELECTRICAL ENVIRONMENT

Supply	120 VAC, 60 Hz	
Max. consumption	< 120W	
Humidity rate	10% to 93% without condensation	
Operating temperature	-4 °F to 140 °F	

STANDARDS

ANSI 156.19	Low energy power operators.
ANSI 156.10	Full energy power operators.
UL 325	Power door operators.

Features

Master / slave operation (2 operators)
Push & go function
Anti-wind function
Open / close speed adjustment
Hold opening time adjustment
Curtain inhibition angle adjustment IR (70 to 125 °)
Internal opening and closing end stops adjustment

* check with operator capacity

Equipments / Options

Master / slave communication cable	<input type="radio"/>	IR curtain	<input type="radio"/>
Antipanic pulling arm (clutchable rod)	<input type="radio"/>	6-position key selector	<input type="radio"/>
Customised operator (cover and frame at desired length)	<input checked="" type="radio"/>	Intermediate cover (2 covers)	<input type="radio"/>
Special paint and coatings (Stainless steel), Anodized finishes	<input type="radio"/>	Raw finish, Natural satin finish	<input checked="" type="radio"/>

● Standard ○ Option



Certified management system



PORTALP USA CORP.
2318 J&C Blvd • NAPLES, FL 34109 • USA
Tel. 800 474 3667 • sales@portalp.com

www.portalpusa.com